

VIKING 54 CONVERTIBLE





Discover the Viking Difference - Experience and Pride.

The Viking Yacht Company is located on the Bass River, a winding marsh-lined tributary, which feeds into the Mullica River and flows into the Great Bay. About 50 minutes by boat to Atlantic City, the wilderness of the Bass River is a stark contrast to the leading edge technology, which precedes every Viking leaving the New Gretna facility. Building a better boat every day has been Viking's philosophy for over 43 years, and this is why Viking leads the industry today in performance, innovation, engineering and luxury. And Viking will also lead tomorrow because its commitment to excellence is reflected in the "Viking Difference."

FAMILY BUSINESS:

Brothers Bill and Bob Healey founded the Viking Yacht Company in 1964 and it remains family owned and operated. Viking is a debt free company and answers only to its unyielding commitment to build the finest boats money can buy.

STATE-OF-THE-ART-FACILITY:

The modern 600,000 square-foot manufacturing facility is equipped with the latest technology and machinery. From multiple CNC routers for cutting wood parts to a \$1 million five-axis profiler, which creates foam plugs to build complex molds, Viking clearly defines cutting edge. And yet, with a 1,400-strong talented and skilled work force, the human element is equally dynamic.

INDUSTRY CERTIFIED:

All Viking Yachts are NMMA Certified Using ABYC Standards.

THE 90 PERCENT FACTOR:

Other than a few major components, such as engines and appliances, virtually every part of a Viking is designed and manufactured on the premises. Whether it is a fiberglass fuel tank or a wiring harness labeled every eight inches with its function, you can be sure of incomparable quality.

FRONT AND CENTER:

New product is the pulse of an engineering-driven company. Viking has the youngest fleet in the marine industry and new models are introduced regularly.

QUALITY CONTROL:

With its four production lines, Viking builds over 100 yachts a year from 45 to 74 feet. By manufacturing most of the yacht's components in house, Viking has an inherent quality control advantage. In addition, each yacht is thoroughly inspected by dedicated personnel during the build process. This attention to detail ensures greater reliability, safety and customer satisfaction.

FINEST SERVICE:

Experienced service personnel with an intimate knowledge of on-board systems stand behind every Viking Yacht. You never go to sea alone when you own a Viking.

VIKING YACHT SERVICE CENTER:

Located on the Intracoastal Waterway in Riviera Beach, Florida, and just minutes from Palm Beach Inlet, our new service complex handles warranty, fiberglass and running gear repairs. Staffed by Viking-trained professionals, Viking is the only manufacturer to provide its owners with a satellite facility solely for their convenience.

PREFERRED INSURANCE RISK:

Vikings are highly regarded by insurance carriers.

RESALE:

Top-shelf engineering enables Vikings to deliver value, not only when you are using it, but at resale time as well.

VERTICAL INTEGRATION:

To complement the Viking experience, we have created two sister companies. Palm Beach Towers designs and crafts the finest aluminum tuna towers, custom railing, fiberglass hardtops, drop-down electronic boxes, flush-mounted electric teaser reels and a host of other specialized items. Atlantic Marine Electronics is the premier source for Viking installed navigation, communication and entertainment equipment. By specifying Palm Beach Towers and Atlantic Marine Electronics for your accessories, you are assured one-stop shopping and will enjoy taking delivery of your new Viking turnkey ready.

TOTAL FOCUS:

Continuous development with innovative details is the hallmark of a leading edge company and every model from 45 to 74 feet represents Viking's philosophy to build a better boat every day.

LEAD NOT FOLLOW:

Viking raises the bar by incorporating the best in design and performance. Powder-coated structural steel engine beds isolate vibration and ensure drive train alignment. The Delta-T hull-side mounted ventilation system keeps the engineroom dry and combustion and propulsion noise levels low. From technical advancements like frameless windows, underwater exhaust systems and tank testing to designer touches like curved doorways and exquisite joinery, Vikings are the epitome of luxury and seagoing excellence.

See for yourself why Viking craftsmanship and blue-water performance are the standards by which other boats are judged. Please contact your Viking dealer to arrange a factory tour and sea trial at your convenience and experience the "Viking Difference."



Own every inch of the sea. Dominate the tournament circuit worldwide.

On the tournament circuit, Viking Yacht owners collect their fair share of hardware. In fact at the 2005, 2006 and 2007 Miami International Boat Shows, the Viking Yacht Company and its dealer network were awarded the World Billfish Series' President's Cup. This honor acknowledges that more winning teams on the WBS worldwide tournament circuit fish aboard Vikings than any other boat manufacturer. Stats collected during the 2006 season, for instance, also revealed that Vikings outgunned the second place finisher by more than double.



The right bait. The right ride. The right rigger.

With our comprehensive demo program, we fish a multitude of East Coast and international tournaments. Viking prides itself on building tournament caliber cockpits and numerous examples of this blue-water expertise exist on the new 54 Convertible. The 160 square-foot work zone is all about winning in style. Molded non-slip on the cockpit sole assures grippy footing even when wet and large scuppers drain water fast and effectively. A transom door and lift gate are standard, but if release is your program, you will appreciate the easy, three-foot reach to the waterline to quickly turn your billfish loose. An aluminum plate is laminated into the sole to anchor a fighting chair, rocket launcher or cocktail table. But when tied to a stubborn fish, stand-up anglers and crew also will appreciate the comfort afforded by the rounded coamings. At night, be sure to turn on rope lighting beneath the coamings to gently illuminate the cockpit to show off the surroundings.



■ Cleared for action, the 160 square-foot cockpit packs an arsenal of fishing features. Shown with optional teak.

■ A built-in soda box at the salon step lets anglers chill out without leaving the strike zone.

■ Fish and stowage wells are insulated, heavily gasketed and fitted with locking hatches that are supported with stainless-steel gas struts.

■ Viking's observation mezzanine is the second best seat in the cockpit after the fighting chair. The mezzanine is a superb area to await a strike with its sun and spray protection.

■ Beneath the mezzanine cushions there is considerable freezer space for bait and food, plus gear and tackle stowage, as well as engineroom access.

Engineered to live large in the wild.

The 15-degree transom deadrise is a strong argument for swift speed and easy planing to maximize engine efficiencies throughout the operating range of the 12-cylinder 1550 CRM common rail MAN diesels. Standard fuel capacity is 1,445 gallons and this can be increased to 1,745 gallons for additional range. Fuel, water and waste tanks are manufactured by Viking with its exclusive resin-infusion process and designed so the tank bottoms mirror the hull bottom. This maximizes draw and enhances the center of gravity. Visually, the aggressively raked stem of this new boat makes it clear that its mission is to get offshore quickly in the worst of conditions without sacrificing speed or comfort. The hull's razor-like entry is a complement to the flare and the convex curvatures of the running surface. This permits the hull to ride high while ripping over and through head seas followed by a soft and gentle transition as it re-enters coming back down into the trough. Wherever you fish and regardless of how far you have to go, when you throttle back to drop the outriggers and put the lines over, you will feel refreshed and ready for the first strike of the day and stay that way until it is time to head home.



Stimulate your senses. They'll thank you for it later.

The new Viking 54 Convertible once again showcases Viking Yacht's dominance in the marine market place. Like all new Vikings, the 54 Convertible started with a clean sheet of paper and a comprehensive list of performance and accommodation attributes designed to deliver a stellar experience second to none. To be sure, after 43 years of designing and producing world-class yachts the task does not get easier because our expectations and the presumptions of our owners ascend with each new model. But it is a challenge we embrace in our commitment to "build a better boat every day."



Finding your way is easy aboard a Viking.

Electronics stow neatly and safely beneath clear acrylic panels in raised fiberglass pods affording complete navigation capabilities in any weather. The raised pods also permit considerable room inside the console to service the equipment and provide additional stowage space. A Moritz safety monitoring system tracks critical engine and ship status with audible and visual alarms.



- When specifying electronics for your new Viking, take advantage of the expertise offered by our sister company, Atlantic Marine Electronics. With headquarters adjacent to our New Gretna facility and satellite locations on the east and west coasts of Florida, AME can design and install communication, navigation and entertainment systems and offer service wherever your yacht is. Training also is provided by AME technicians so you are well versed in the operation of your yacht's equipment. We encourage you to visit company headquarters where you can touch and feel full size mock up helms to help design the best package for your Viking. Ordering your electronics through AME also ensures your Viking can be delivered turnkey ready for action. Whether your needs require a basic package for inshore cruising, or a sophisticated and integrated system with specialized communications and thermal imaging cameras, AME will deliver the best value for your complete satisfaction.





Go ahead.

Try not to smile when you take the wheel.

The centerline helm provides excellent sightlines for fishing, as well as reading shallow Bahama waters. Power-assisted hydraulic steering is standard. Matched to custom-made high-speed stainless-steel rudders, the 54 Convertible is quick and nimble like a mongoose tipping through a cobra convention. Electronic controls will rush you from idle to wide open throttle effortlessly. Twin Murray Products teak ladder back seats are standard and there's plenty more seating on the forward and port lounges. Each lounge offers stowage below for fishing rods and other loose gear. There also is room for another drink cooler and freezer ahead of the console.



Standing tall, standing proud.

Specify Viking's sister company Palm Beach Towers for your tuna tower design and installation and the benefits of owning a Viking become even more obvious. With locations in New Jersey and Florida, Palm Beach Towers can build and install your tuna tower or any custom made aluminum fabrication at your convenience. Similarly, delivery time is quick because the tower can be fabricated while your boat is still on its production line. This allows you to get on the water and aboard your new Viking that much sooner.



■ Palm Beach Towers also produces fiberglass components, which are custom designed to your needs. The drop-down electronics box, for example, fits neatly and securely in the fiberglass hardtop overhead. Whether you choose to use the space for navigation electronics or engine gauges, you are assured the equipment will be safe from the elements yet easy to view and use.



■ Electric teaser reels, also can be outfitted into the fiberglass hardtop. Positioned directly over the head of the operator, a touch of a finger reels in the teaser to clear the way when a fish strikes. The roomy teaser reel compartment also can be furnished with additional radio speakers, so communicating is easier and there's less chance you will miss an important transmission.



■ In addition to the practical aspect of each amenity, Palm Beach Tower installations are well thought out, clean and valuable assets to your boating experience. The attention to detail is studied as demonstrated by the hardtop quartz lights, which are flushed-mounted for appearance and vented for long bulb life.

Need a getaway from the elements? Step inside.

Utilizing its nearly 18-foot beam affords a magnificently proportioned hand-finished teak salon. The L-shaped lounge to starboard with stowage below is perfect for relaxing after a fun day on the water. The lounge matches up with a comfortable dinette ideal for feasting on the day's catch aptly prepared in the world class galley to port with Sub-Zero under counter refrigeration, a microwave/convection oven and an electric cooktop. Is your company staying to enjoy those fresh-caught yellowtail fillets? No problem. There's plenty of seating in the salon and dinette, plus a pair of bar stools at the Corian-topped galley counter. A home theater system with a 32-inch flat screen television, Bose LS 18 DVD/CD player, VCR and FM stereo with surround sound provides a selection of entertainment choices.



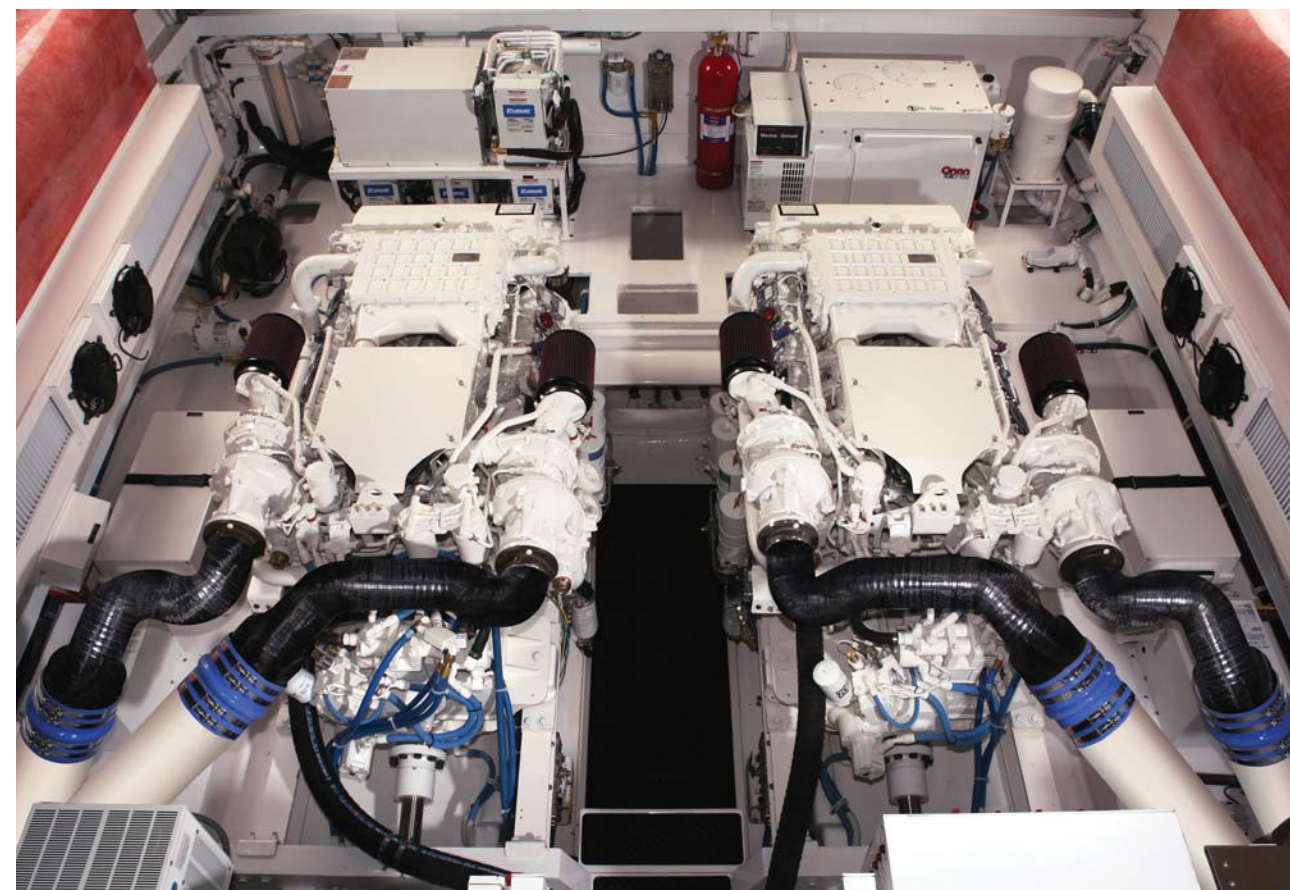
Peace and serenity.

There are accommodations for six in the three staterooms. The master suite, complete with its own head and stall shower features a queen-size walk-around bed flanked with teak end tables. There is a maple-lined stowage compartment beneath the mattress and additional stowage in the hanging lockers, in drawer space and in the credenza at the stateroom entry.



Comfort and relaxation.

The starboard stateroom offers the space saving convenience of crossover berths and private access to the head. Forward a queen-size walk-around berth is featured in the standard layout, but a popular variation with crossover berths is available. This stateroom also shares the starboard head. Like the master suite, the guest staterooms are lavishly detailed with beautiful joinery, ample stowage and attention to detail.



White hot with speed to sizzle.

The stand-up engineroom features Viking's innovative and great looking powder-coated web-frame structural steel engine beds. Mounted to dedicated transversals, they isolate the engines to minimize vibrations and ensure drive-train alignment. With standard engines, the 54 Convertible can cruise around 31 knots and will approach 40 knots with optional power depending upon load, sea state and boat condition.



DETAILS MATTER



- Stowage is important on any yacht and the Viking 54 excels in this department. Beneath the salon sofa you will find more than ample room for extra gear, fishing tackle, tools and other supplies.



- You can count on Viking to provide first class entertainment systems throughout the yacht, including a 32-inch flat screen television in the salon with surround sound.



- For the sounds of music and DVD entertainment, the Bose LS 18 package tunes in the fun with an easy to operate remote.



- The Delta-T engineroom ventilation system has supply and discharge fans to keep the fresh air flowing and a water intrusion suppression design to keep the machinery space dry.



- Stainless-steel hardware combines beauty and brawn.



- Custom designed and built, Palm Beach Towers are available for any fishing mission and perfectly match the lines and style of the yacht.



- Whether you are a light tackle fan, a blue-water champion or both, you will find more than enough room to stow all your fishing gear and then some.



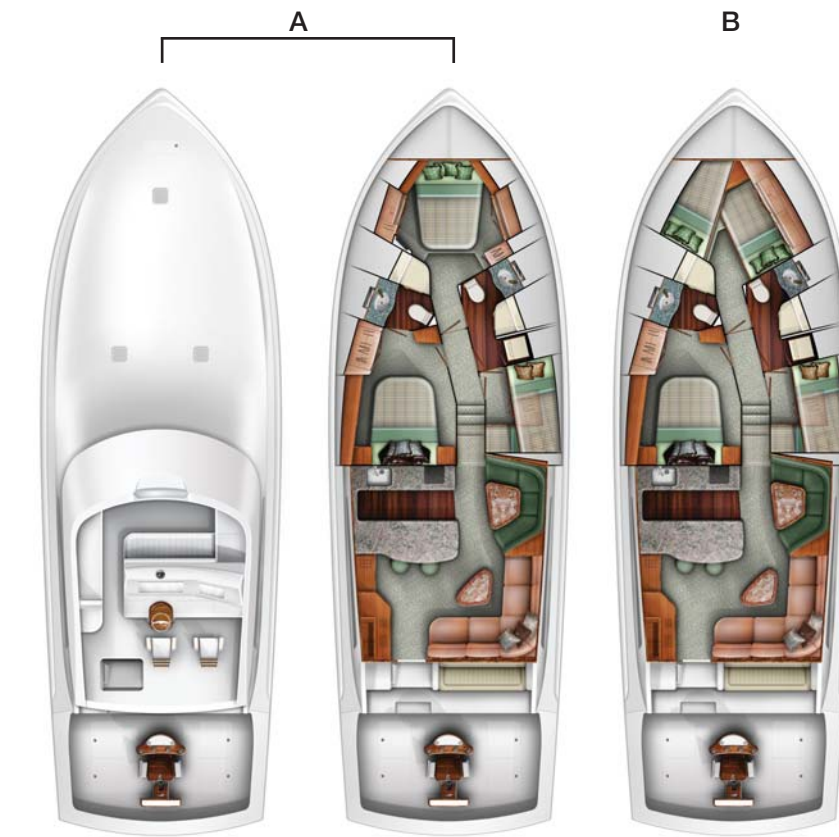
- Aptly placed stereo speakers, powder-coated grab rails and the flybridge hatch toe kick are but a few examples of Viking's design showcase.

SPECIFICATIONS

VIKING 54 CONVERTIBLE		
Length, Overall (L.O.A.)	54 ft. 8 in.	16.67 m
Length, Overall w/bow pulpit	58 ft. 10 in.	17.93 m
Waterline Length	47 ft. 2 in.	14.38 m
Beam	17 ft. 9 in.	5.41 m
Freeboard Forward	6 ft. 6 in.	1.98 m
Freeboard Aft	2 ft. 8 in.	.81 m
Draft	5 ft. 2 in.	1.57 m
Displ.	77,900 lbs.	35,366 k
Height Above Waterline:		
To Top of Hardtop	17 ft. 1 in.	5.2 m
To Top of Masthead Light	20 ft. 1 in.	6.12 m
Fuel	1,445 gals.	5,468 l
Fuel Optional	1,745 gals.	6,603 l
Water	225 gals.	851 l
Holding Tank	100 gals.	378 l
Cockpit	160 sq. ft.	

ACCOMMODATIONS

A	Aptly designed for tournament fishing, the open flybridge provides 360-degree visibility. The bridge overhang shields the cockpit mezzanine from sun and spray and allows generous room to pass behind the flybridge helm seats. The standard interior layout (View A) has three staterooms and two heads and features a queen-size berth forward.
B	Crossover berths in the forward stateroom (View B) also are available. This plan provides additional flexibility without sacrificing comfort or privacy. Both layouts share commonalities in the salon, galley, master and starboard guest stateroom. Each plan also includes a laundry center in the starboard head.





Please contact your Viking dealer to arrange a sea trial and a tour
of our modern 600,000 square foot facility on the Bass River near Atlantic City.

Route 9, On the Bass River - New Gretna, NJ 08224
Phone: 609-296-6000 - Fax: 609.296.3956 - www.vikingyachts.com

The right is reserved to make changes, without notice, at any time, in equipment, materials, prices and specifications. Accommodation drawings and photos may show optional equipment

Proud Supporter of

